

INDEX OF SHEETS

Sheet No.	Dwg. No.	Description
1.	660	Title Sheet
2.	661	Layout Bridge 694
3.	662	Details " "
4.	663	" " " "
5.	664	Layout Bridge 348
6.	665	Arch Details Br. 348
7.	666	Details of East Approach Br. 348
8.	667	" " West
9.	668	Layout Bridge 349
10.	669	Arch Details Br. 349
11.	670	Details of Approaches Br. 349
12.	671	Layout Bridge 350
13.	672	Details of Substructures Br. 350
14.	179	Details of 35' R. C. D. Girder Span
15.	673	Layout Bridge 351
16.	674	Details of East Approach Br. 351
17.	675	" " West
18.	178	Details of 30' R. C. D. Girder Span
19.		Plan - Profile Approach to Br. 694
20.		" " " "
21.		Cross Sections " " " "
22.		" " " " " "

STATE OF ARKANSAS  
STATE HIGHWAY DEPARTMENT

PLAN OF PROPOSED BRIDGES  
ON  
FT. SMITH-CHARLESTON RD.  
SEBASTIAN AND FRANKLIN COUNTIES

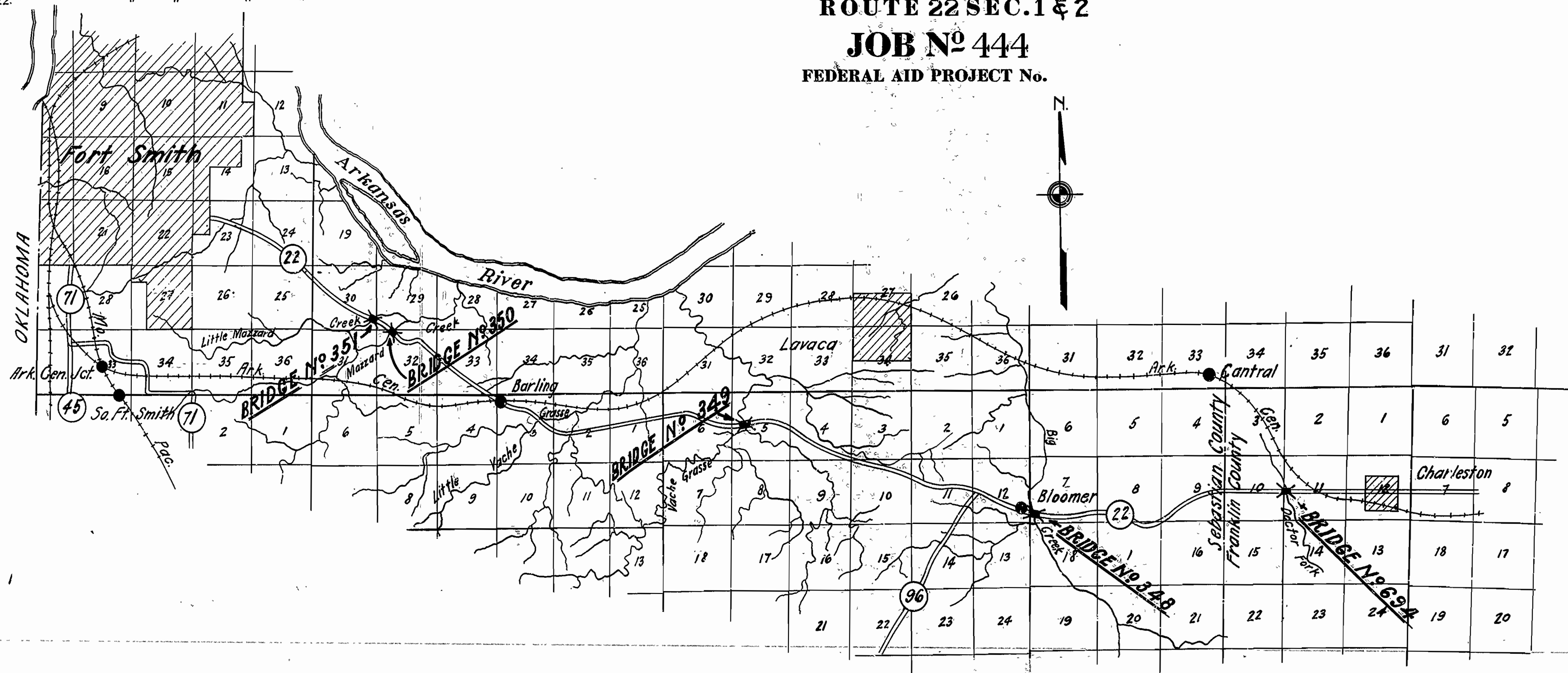
ROUTE 22 SEC. 1 & 2

JOB NO 444

FEDERAL AID PROJECT No.

QUANTITIES

No 12 - Earth excavation	8854	C.Y.
No 12 - Loose Rock excavation	406	C.Y.
No 12 - Solid Rock excavation	1244	C.Y.
No 13 - Dry excavation for structures	1390	C.Y.
No 13 - Wet " "	935	C.Y.
S. P. - Solid Rock excavation for struct.	207.3	C.Y.
No 54 - Class A Concrete	1084.78	C.Y.
No 54 - " B " "	390.38	C.Y.
No 54 - " 3 " "	899.41	C.Y.
No 55 - Reinforcing steel	317,745	Lbs.
No 69 - Rip Rap 1 foot thick	150	Sq. Yd.
No 74 - Concrete Railing for structures	1635	Lin. Ft.
No 11 - Clearing	20	Ac.
No 11 - Grubbing	13	Ac.



LAYOUT

Scale: 1" = 1 MI.

GROSS LENGTH OF PROJECT 2700' = 0.511 MI.  
NET LENGTH OF PROJECT 2700' = 0.511 MI.

APPROVED  
COMMISSIONER, STATE LANDS, HIGHWAYS, AND IMPROVEMENTS

APPROVED  
STATE HIGHWAY ENGINEER

RECOMMENDED FOR APPROVAL  
DISTRICT ENGINEER - 6th DISTRICT, BUREAU OF PUBLIC ROADS

RECOMMENDED FOR APPROVAL  
CHIEF ENGINEER - 6th DISTRICT, BUREAU OF PUBLIC ROADS

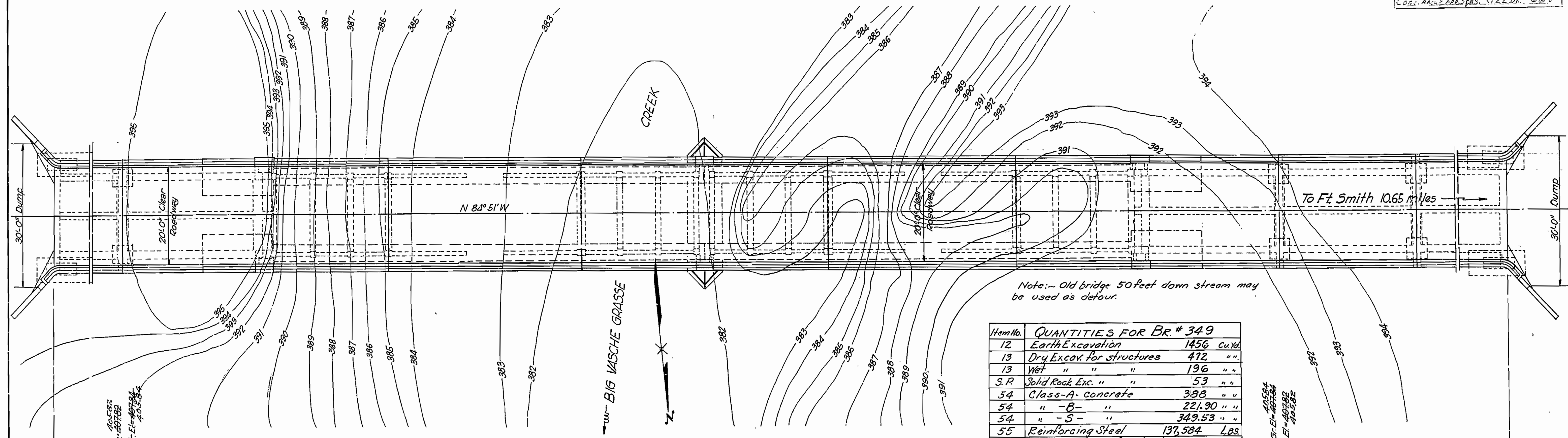
APPROVED  
DIRECTOR, BUREAU OF PUBLIC ROADS

BRIDGE ENGINEER

BRIDGES NO. 694, 348, 349, 350, 351. DRAWING NO. 660

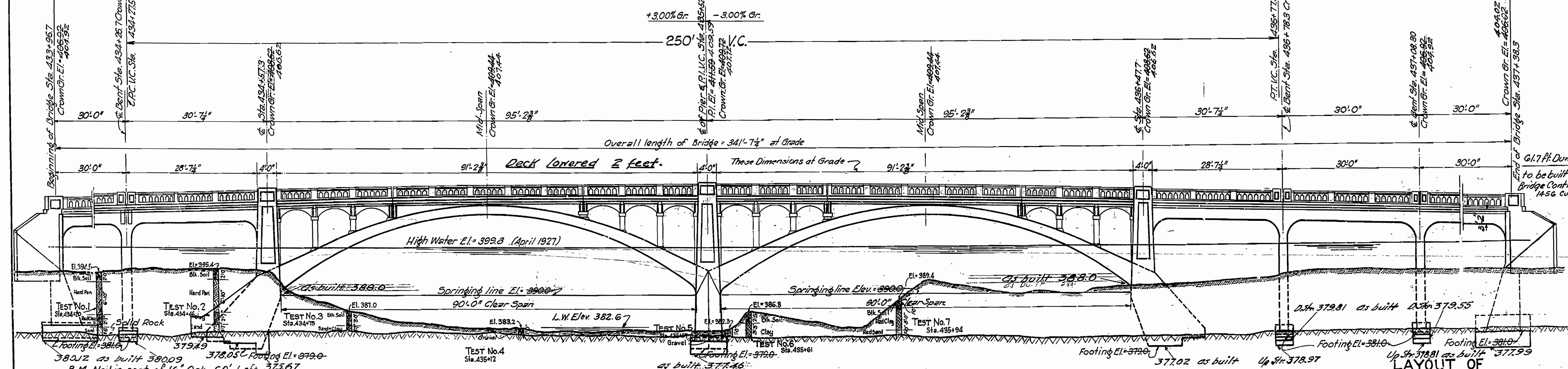


FISCAL YEAR	Job No.	SHEET NO.	TOTAL SHEETS
1928	444	9	22
Cons. Acc. 2488 Spas. Rt 22 Dr. # 668			



Item No.	QUANTITIES FOR BR. # 349	
12	Earth Excavation	1456 cu yd
13	Dry Excav. for structures	472 " "
13	Wet " " "	196 " "
S.P.	Solid Rock Exc. " "	53 " "
54	Class-A- concrete	388 " "
54	" -B- "	221.90 " "
54	" -S- "	349.53 " "
55	Reinforcing Steel	137,584 LBS
74	Concrete Railing for structures	672 Lin Ft

**PLAN**  
Scale: 1"=10'-0"



**ELEVATION**  
Scale: 1"=10'-0"

Note: For Details see Drgs. No. 669 & 670

Drainage Area - 109 Sq. Miles.  
Topog. - Hilly, 50% Wooded.

Revised 12-15-31  
Actual testing elevations  
Deck lowered 2 feet

CONCRETE ARCH and APPROACH SPANS  
OVER BIG VACHE GRASSE CREEK  
ROUTE 22 SEC. 1  
ARKANSAS STATE HIGHWAY DEPARTMENT  
LITTLE ROCK, ARK.

Drawn By: G.V. Date: \_\_\_\_\_  
Traced By: G.V. Date: 1-27-28  
Checked By: G.V. Date: 2-6-28  
Scale: 1 in. = 10 ft.  
BRIDGE No. 349 DRAWING No. 668

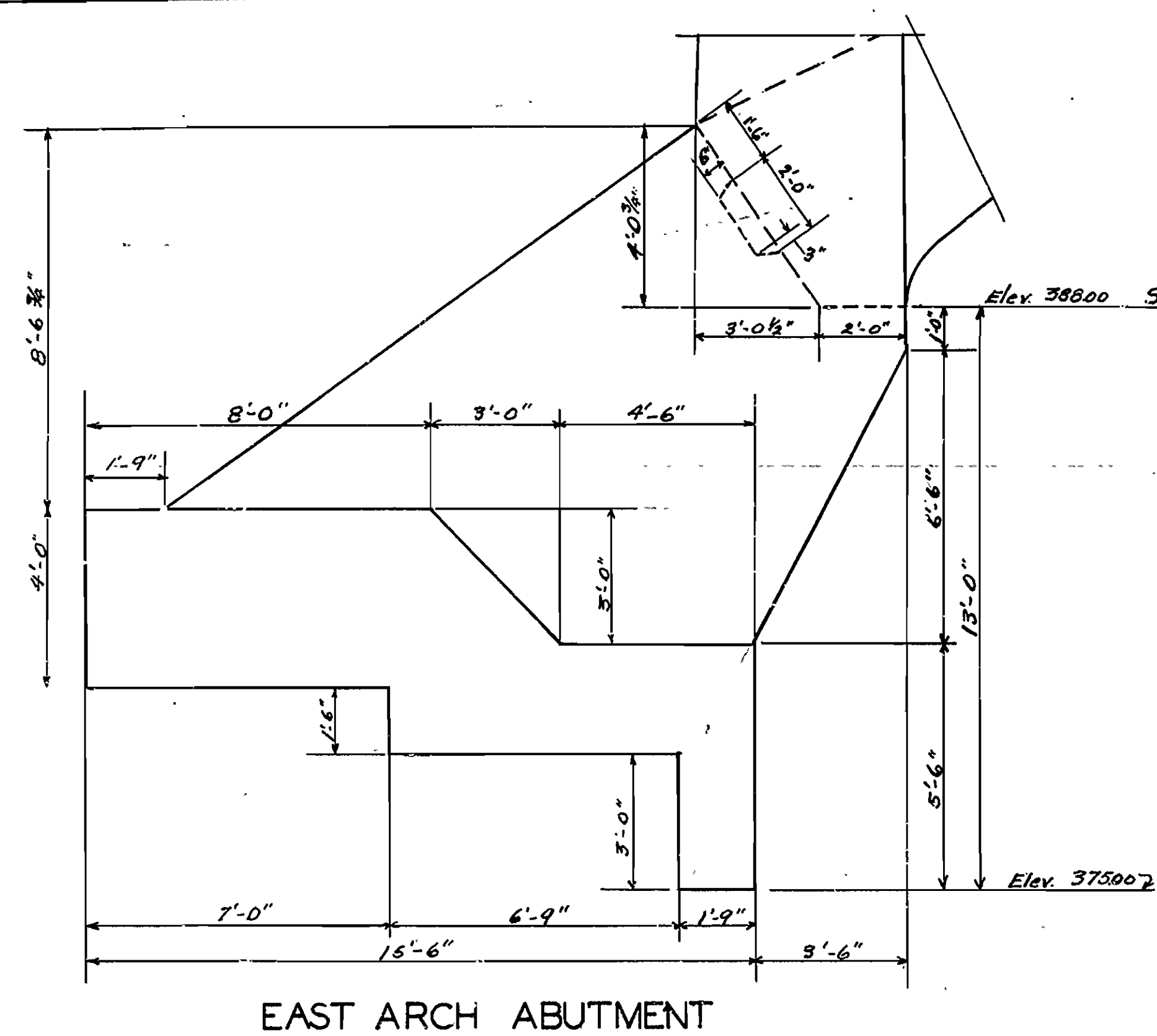
Bridge Engineer.



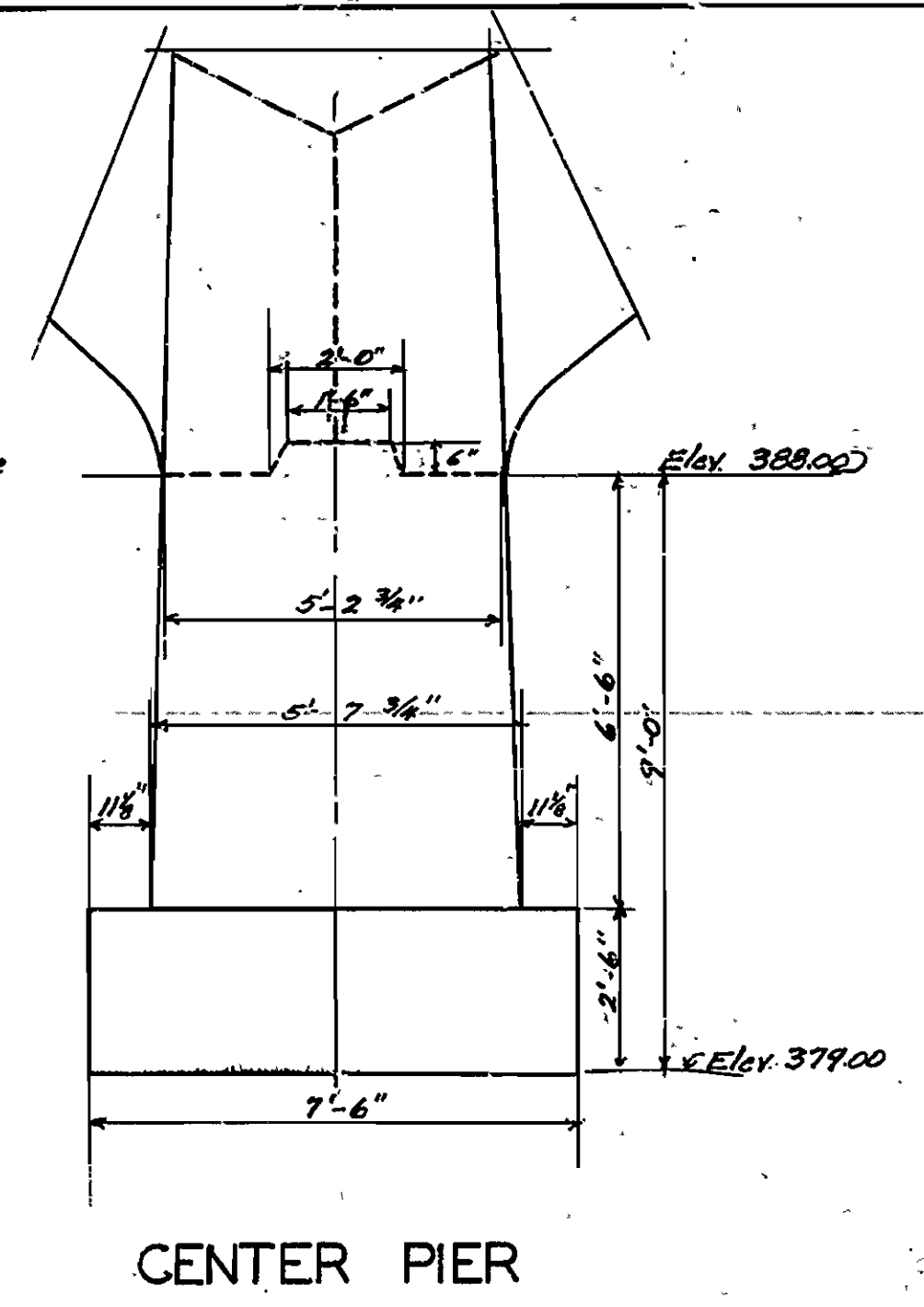




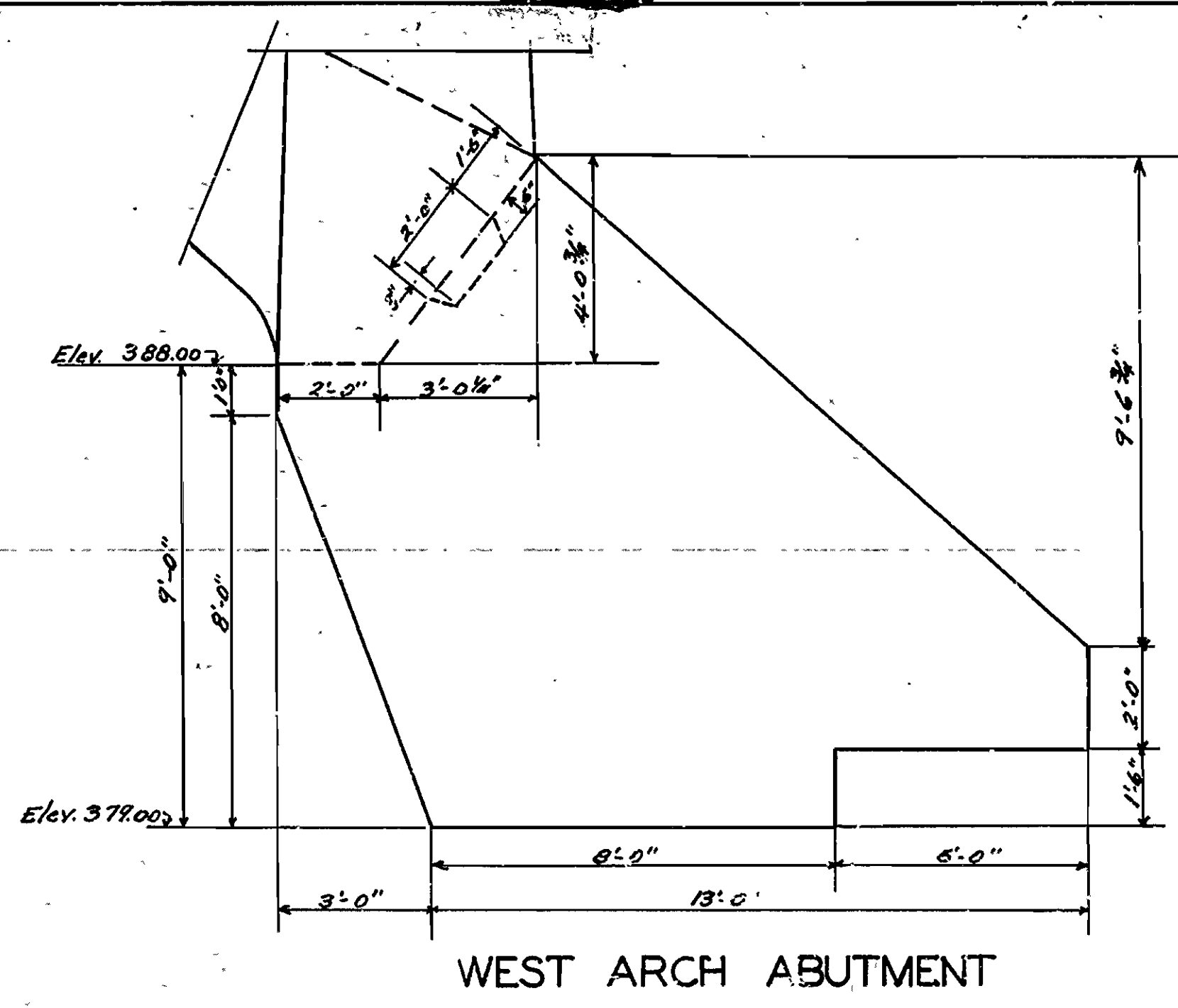
REVISION OF PIERS AND ABUT. DET. 669			



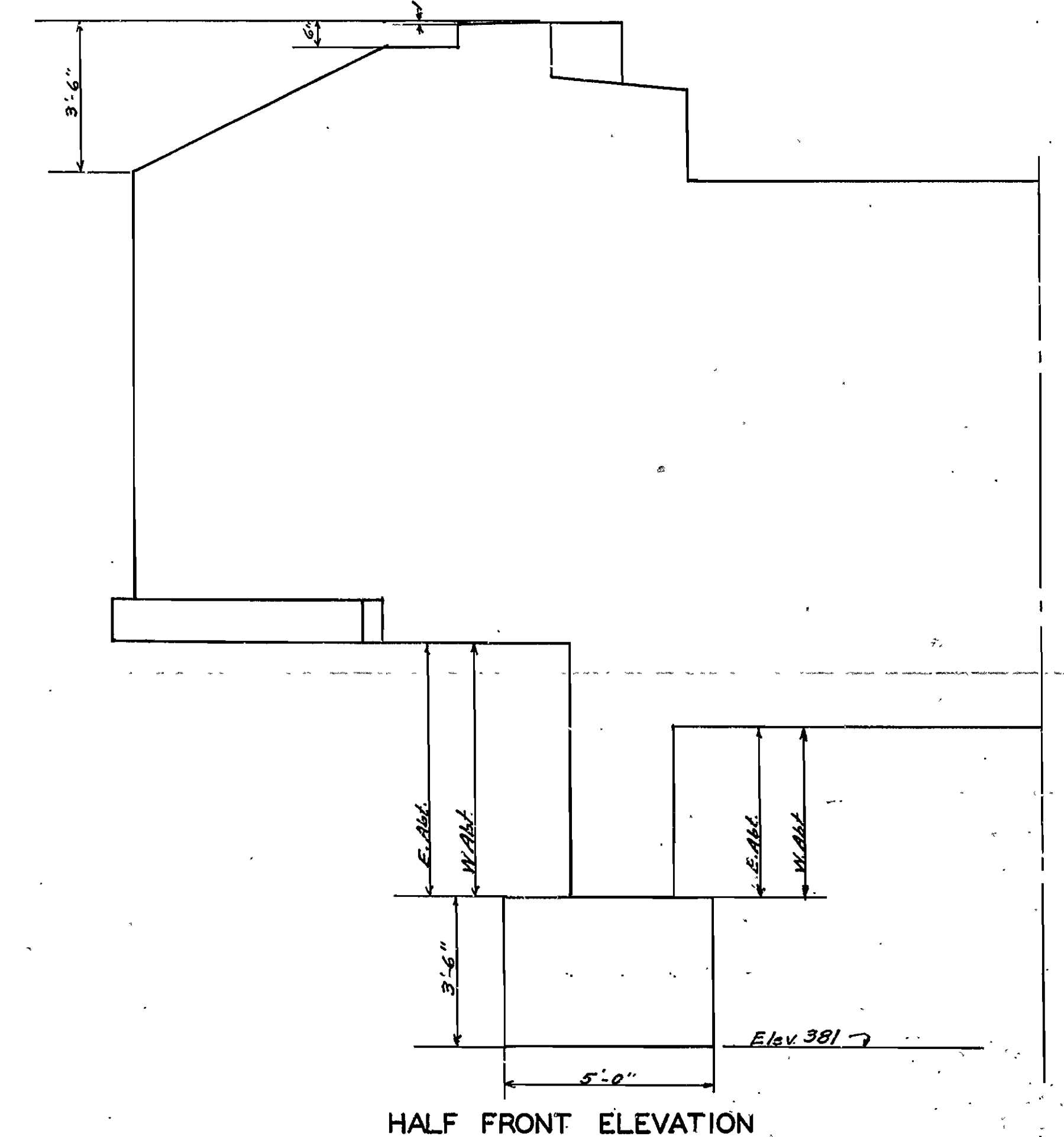
EAST ARCH ABUTMENT



CENTER PIER

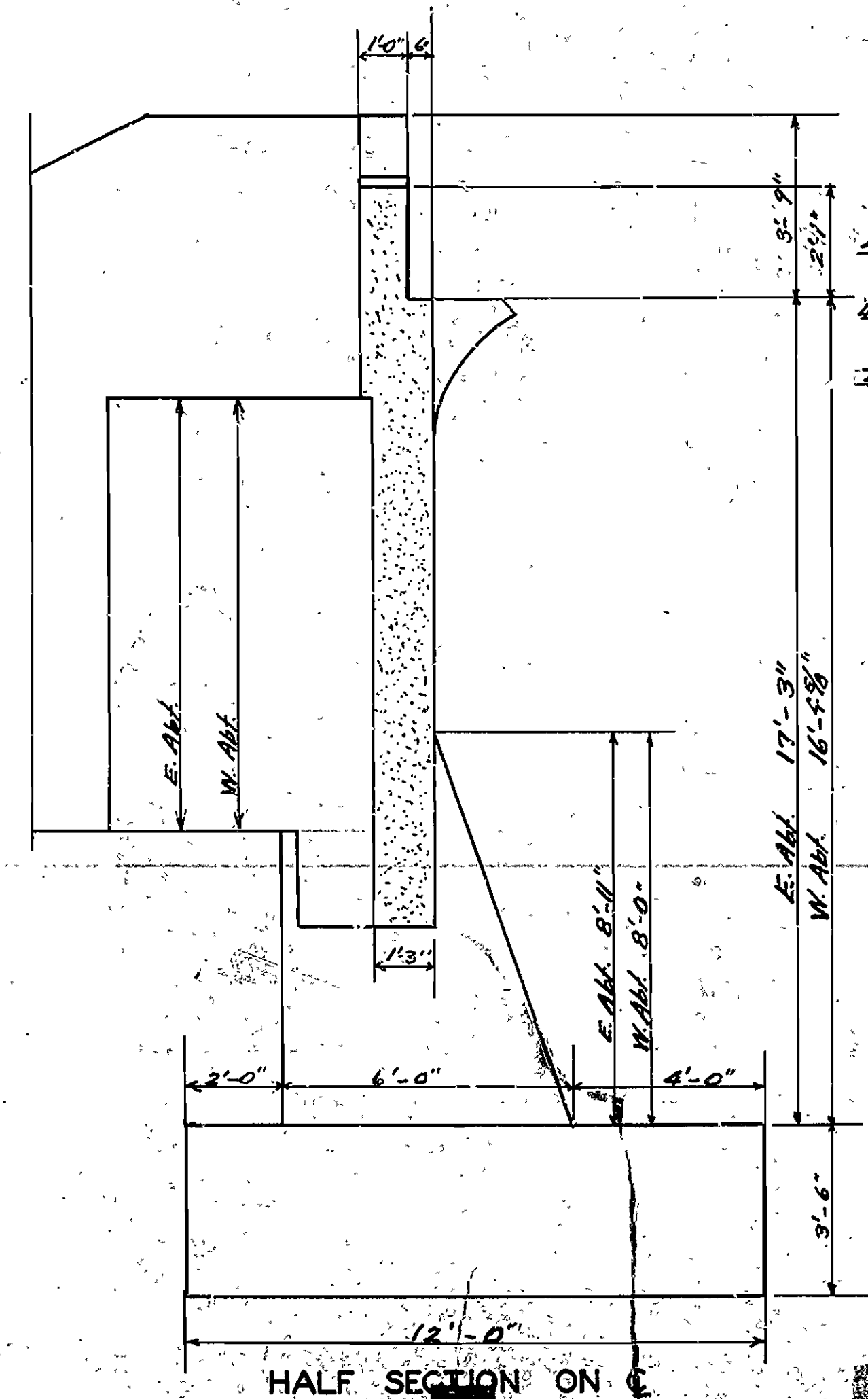


WEST ARCH ABUTMENT

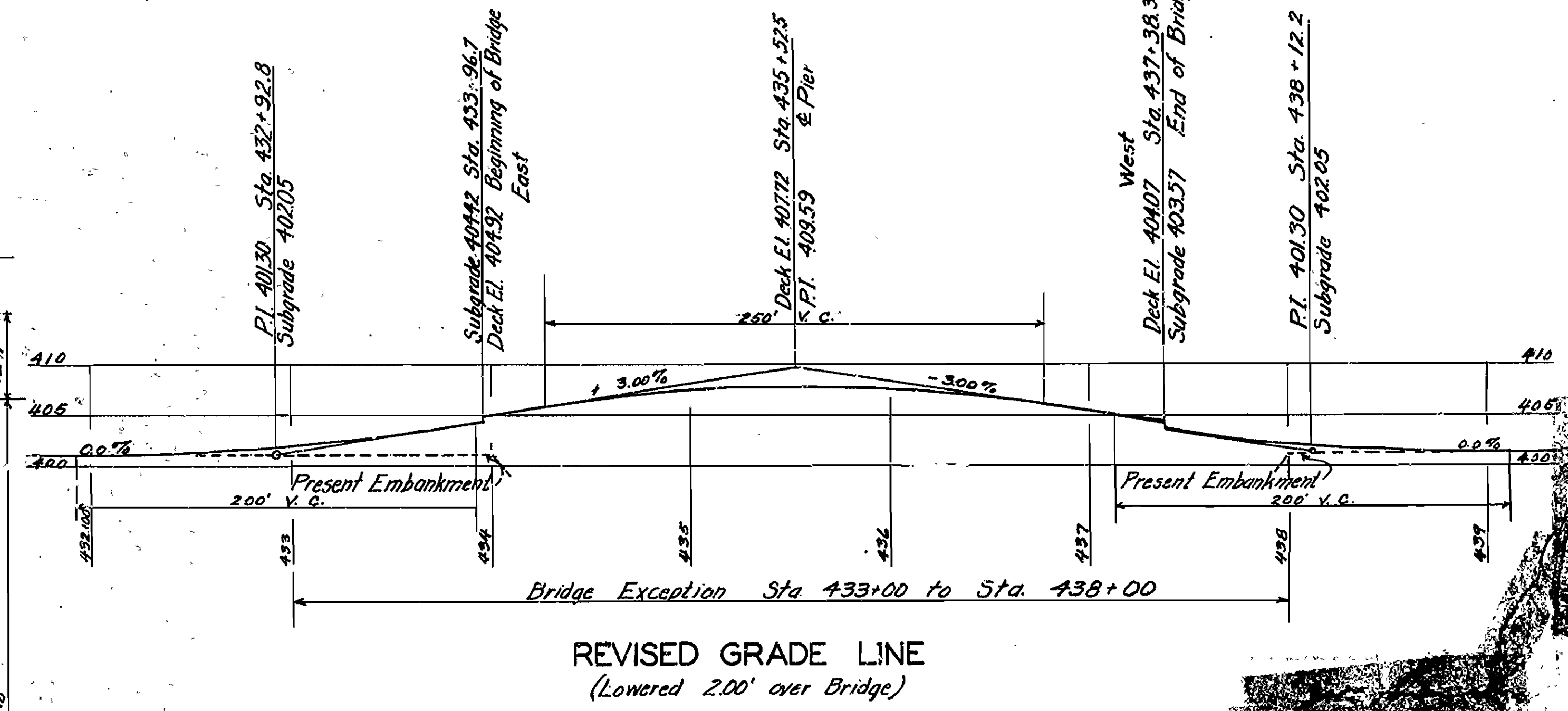


HALF FRONT ELEVATION

END ABUTMENT



HALF SECTION ON C



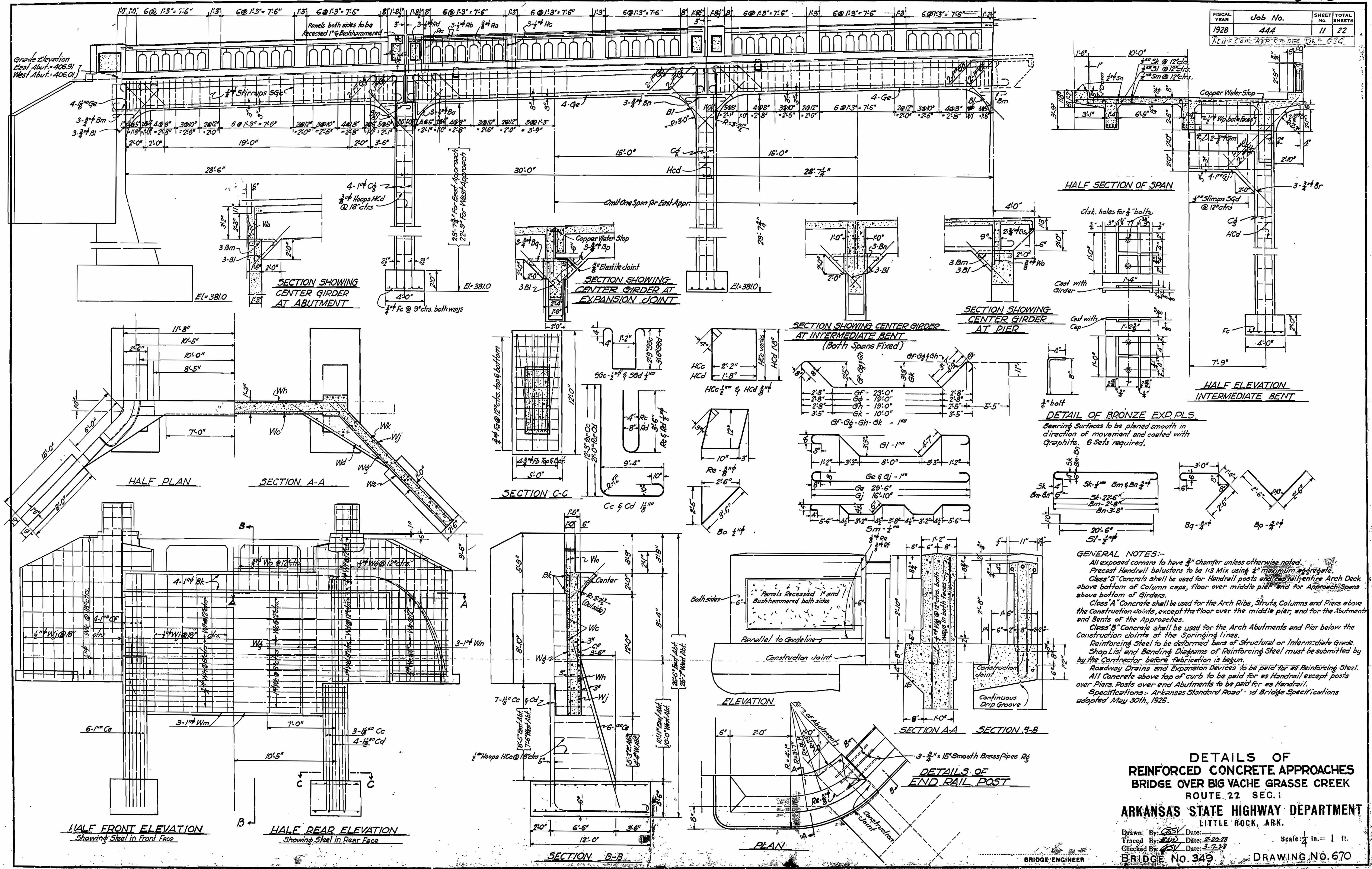
REVISED GRADE LINE  
(Lowered 2.00' over Bridge)

REVISION OF PIERS & ABUTMENTS  
DUE TO  
LOWERING OF GRADE LINE  
BRIDGE OVER BIG VACHE GRASSE CREEK  
BRIDGE NO. 349 JOB NO. 444

DRAWN *Bill* DATE *5/22/66*  
TRACED *Bill* DATE *5/23/66*  
Drawing No. 669-A



FISCAL YEAR	Job No.	SHEET TOTAL
1928	444	11 22
Rein. Conc. Arch. Bridge, Dk. 620		



**GENERAL NOTES:-**

- All exposed corners to have 3/4" chamfer unless otherwise noted.
- Precast Handrail balusters to be 1:3 Mix using 4" maximum aggregate.
- Class 'S' Concrete shall be used for Handrail posts and caprail, entire Arch Deck above bottom of Column caps, floor over middle pier and for Approach Spans above bottom of Girders.
- Class 'A' Concrete shall be used for the Arch Ribs, Struts, Columns and Piers above the construction joints, except the floor over the middle pier, and for the Abutments and Bents of the Approaches.
- Class 'B' Concrete shall be used for the Arch Abutments and Pier below the construction joints at the Springing Lines.
- Reinforcing Steel to be deformed bars of Structural or Intermediate Grade. Shop List and Bending Diagrams of Reinforcing Steel must be submitted by the Contractor before fabrication is begun.
- Roadway Drains and Expansion Devices to be paid for as Reinforcing Steel.
- All Concrete above top of curb to be paid for as Handrail except posts over Piers. Posts over end Abutments to be paid for as Handrail.
- Specifications: Arkansas Standard Road and Bridge Specifications adopted May 30th, 1925.

**DETAILS OF REINFORCED CONCRETE APPROACHES BRIDGE OVER BIG VACHE GRASSE CREEK ROUTE 22 SEC. I**

**ARKANSAS STATE HIGHWAY DEPARTMENT**  
LITTLE ROCK, ARK.

Drawn By: *GSJ* Date: *2-20-28*  
Traced By: *GSJ* Date: *2-20-28*  
Checked By: *GSJ* Date: *2-22-28*  
BRIDGE No. 349 DRAWING No. 670

BRIDGE ENGINEER